



# PUERTO RICO **Heineken**<sup>®</sup> INTERNATIONAL REGATTA

Organizing Authority

**Federación de Vela de Puerto Rico**

Venue

THE YACHT CLUB AT PALMAS DEL MAR  
HUMACAO, PUERTO RICO

MAY 22 – MAY 25, 2015

## SAILING INSTRUCTIONS

### 1. RULES

- 1.1 This Regatta will be governed by the rules as defined in The Racing Rules of Sailing (RRS). To the extent permitted by Part 7 of the RRS, specific provisions of the RRS may be modified, altered or made inoperative by the Notice of Race (NOR) or the Sailing Instructions (SI).
- 1.2 The regulations of the Caribbean Sailing Association (CSA), the CSA Minimum Safety Requirements, the International J-24 Class Association (IJCA) Rules as modified by the Caribbean J-24 Class Association and the IC-24 class Rules will apply, except as modified, altered or made inoperative by the NOR or the SI, to the extent permitted by such class rules.
- 1.3 If there is a conflict between languages the English text will take precedence.

### 2. ADVERTISING

- 2.1 ISAF regulation 20.4 applies. Boats may be required to display advertising chosen and supplied by the Organizing Authority (OA) in all or any of the races, if applicable.

### 3. NOTICE TO COMPETITORS

- 3.1 Notices to Competitors will be posted on the official notice board located in the Regatta offices at The Yacht Club, Palmas del Mar, main building premises.

### 4. CHANGES IN THE SAILING INSTRUCTIONS

- 4.1 Any changes to the Sailing Instructions will be posted before 0800 hours on the day it will take effect, except that any change to the schedule will be posted by 2000 hours on the day before it will take effect.

### 5. SIGNALS MADE ASHORE

- 5.1 Signals made ashore will be displayed at the flag staff in front of The Yacht Club main building.
- 5.2 When Flag "AP" is displayed ashore, "1 minute" is replaced with not less than "60 minutes" after the "AP" is lowered. This changes RRS "Race Signals".

## 6. SCHEDULE OF RACES

- 6.1 Saturday, May 23<sup>rd</sup>, 2015 and Sunday May 24<sup>th</sup>, 2015
  - a) Multiple Race Formats will take place with the warning signal for the first race scheduled for 1100 hours.
  - b) No warning signal will be displayed after 1600 hours.
- 6.2 Monday, May 25<sup>th</sup>, 2015
  - a) Multiple Race Formats will take place with the warning signal for the first race scheduled for 1100 hours.
  - b) No warning signal will be displayed after 1400 hours.

## 7. CLASS FLAGS

- 7.1 The following Class Flags are designated for the following classes:

CSA Racing	Pink Flag
Melges 32	White Flag with Melges 32 insignia
PHRF Jib & Main	Green Flag
J-24	White Flag with J-24 insignia
IC-24	White Flag with IC-24 insignia
Chalana 24	White Flag with Chalana 24 insignia
RAYA	Yellow Flag
Hunter 21.6	White flag with Hunter 21.6 insignia
Mariner 19	White Flag with Mariner 19 insignia

- 7.2 Except for One Design Classes, Class Flags will be distributed at the Skippers Meeting for each participating boat. Each boat in the One Design Classes shall attach its Class Flag to the backstay above the stern rail.
- 7.3 The decision as to which class a boat races in rests entirely with the Regatta Race Committee, whose decision will be final.
- 7.4 Jib & Main boats are allowed to use a "J" dimension pole, and shall not fly more than one (1) headsail at a time.

## 8. RACING AREA

- 8.1 The Racing Area will be located approximately (2.0 Nm) two Nautical miles, 110° from the Palmas del Mar Marina entrance.

8.2 Attachment 1 shows the approximate location of the racing area on the waters adjacent to the Palmas del Mar Marina Resort.

## 9. MARKS

9.1 Marks will be yellow and/or orange inflatable buoys as described below:

M1	5' Orange Tetrahedron
M2	5' Orange Tetrahedron
M3	5' Yellow Teardrop
M4 (S/P)	4' Orange Teardrops
M5	5' Orange Tetrahedron
Start Pin	4' Orange Tetrahedron
Finish Pin	4' Orange Tetrahedron
OS1	5' Orange Tetrahedron located south of "Cayo Santiago". L 18° 08.908' N, Lo 065° 43.884' W; Approx. Ref to NOAA Chart 25650
OS2	5' Orange Cylindrical Mark located east of "Cayo Batata". L 18° 06.816' N, Lo 065° 45.720' W; Approx. Ref to NOAA Chart 25650

## 10. THE COURSES

10.1 Attachment II describes the order in which all marks are to be passed and provides a course layout.

10.2 All marks are to be left to PORT.

10.3 Mark M4 are leeward marks in the form of a gate (marks M4S and M4P), boats shall pass through the gate between S and P. This gate may be replaced by a single mark, Mark M4 to be left to port. When there is a gate, boats shall sail between the gate marks from the direction of the previous mark and round either gate mark.

10.4 The course number designation for the course to be sailed by each class will be posted no later than four (4) minutes before each start for that class by the Race Committee Signal Vessel displaying the designated numeral pennant. This changes RRS 27.1.

## 11. THE START

11.1 The starting line will be between a staff displaying an orange flag on the Race Committee signal boat at the starboard end and a nearby yellow teardrop 4' Pan Pepin mark or staff displaying an orange flag on the Race Committee mark boat on the port end.

11.2 To alert boats that a race or sequence of races will begin soon, the orange starting line flag will be displayed with one sound signal at least five minutes before a warning signal is made.

11.3 The orange flag(s) on the staff(s) designating the starting line will be removed (with no sound signal) when the race management team determines that it will not promptly (usually within 5 minutes of the prior start) make the warning signal for the next race in a sequence of races.

11.4 After the start the starting line shall be considered an obstruction. Only boats starting shall cross the start line.

- 11.5 Boats whose warning signal has not been made shall avoid the starting area.
- 11.6 A boat starting later than 4 minutes after her starting signal will be scored Did Not Start (DNS). This changes RRS 35, A4, and A5.
- 11.7 If flag U has been displayed as the preparatory signal, no part of a boat's hull, crew, or equipment shall be in the triangle formed by the ends of the starting line and the first mark during the last minute before her starting signal. If a boat breaks this rule and is identified, she shall be disqualified without a hearing but not if the race is restarted or re-sailed or postponed or abandoned before the starting signal. This changes rule 26.

## **12. THE FINISH**

- 12.1 The finishing line will be between a staff displaying a blue flag on a Race Committee boat and a nearby yellow teardrop 4' Pan Pepin mark or staff displaying an blue flag on the Race Committee mark boat on the port end.
- 12.2 During the race the finish line shall be considered an obstruction. Only boats finishing shall cross the finish line.
- 12.3 Boats that have finished shall avoid the finishing area.

## **13. PENALTIES**

- 13.1 Any boat retiring shall advise the Race Committee at the earliest opportunity. Failure to do so may, following a hearing, result in disqualification from the regatta or such other penalty, as the Jury deems equitable.
  - 13.2 Except for breaches of Parts 1 and 2 of the RRS, the Jury may apply any penalty that they deem equitable. This changes RRS 64.1.
  - 13.3 A boat that does not take a penalty in accordance with RRS 44 may accept a 30% penalty before the protest hearing provided there was no damage and the boat did not gain a significant advantage.
- 14.** When a percentage penalty is imposed, it shall be calculated as the percentage of the number of entrants in the class, the number shall be the whole number (rounding 0.5 upward).

## **15. TIME LIMIT**

- 15.1 Time limit for the first boat of each class to finish and the finish window for the last boat to finish in each class will be as follows:

<b>COURSE</b>	<b>TIME LIMIT</b>	<b>FINISH WINDOW</b>
<b>1, 2, 3, &amp; 6</b>	<b>90 MINUTES</b>	<b>20 MINUTES</b>
<b>4 &amp; 5</b>	<b>4 HOURS</b>	<b>1 HOUR</b>

15.2 Boats failing to finish within the time stated in the Finish Window after the first boat sails the course and finishes will be scored Did Not Finish. This changes RRS 35, A4 and A5.

## **16. PROTESTS AND REQUEST FOR REDRESS**

- 16.1 Protest forms will be available at the Regatta offices at The Yacht Club at Palmas del Mar main building premises.
- 16.2 The protest time limit is Sixty (60) minutes after the Race Committee Signal boat docks, which will be posted on the Official Notice Board.
- 16.3 Hearing notices will be posted within 30 minutes of the protest time limit to inform competitors of hearings in which they are parties or named as witnesses.
- 16.4 Protests will be heard in the order posted, beginning as soon as practical.
- 16.5 Decisions of the International Jury will be final as provided in RRS 70.5.
- 16.6 On the last day of the regatta a request for reopening a hearing shall be delivered within the protest time limit if the party requesting reopening was informed of the decision on the previous day or no later than 30 minutes after the party requesting reopening was informed of the decision on that day. This changes RRS 66.
- 16.7 Other than as allowed in CSA rating rule A.2.3.2 no measurement or rating protest may be lodged after the first day of racing. This request shall be in writing. This changes RRS 60.1(a).

## **17. SCORING**

- 17.1 A minimum of three (3) races will constitute a regatta.
  - a) When 4 races have been completed, a boat's series score will be the total of her race scores.
  - b) In the event that between 5 races and 10 races have been completed, a boat's series score will be the total of her race scores excluding her worst score.
  - c) In the event that more than 10 races have been completed, a boat's series score will be the total of her race scores excluding her two worst scores.

## **18. RADIO COMMUNICATION**

- 18.1 All competing boats shall carry a VHF radio capable of receiving communications from the Race Committee on channel 9.

18.2 The Race Committee Signals Vessel will endeavor to announce a time check 30 minutes before the first warning signal of the first race on each day.

**19. PRIZES**

19.1 Class trophies will be awarded to the first 3 places in each class.

19.2 Cash prizes will be distributed to the participating classes in the following manner:

	1st Place	2nd Place	3rd Place
CSA Spinnaker	\$1,000	\$400	\$300
Melges 32	\$1,000	\$500	\$350
PHRF Jib & Main	\$800	\$400	\$300
J24	\$600	\$300	\$150
IC24	\$1,200	\$600	\$400
Chalana 24	\$300	\$150	\$100
RAYA	\$250	\$150	\$75
Mariner 19	\$250	\$150	\$75
Hunter 21.6	\$250	\$150	\$75

The Organizing Authority reserves the right to redistribute the above prizes based on the actual classes which compete.

**20. DISCLAIMER OF LIABILITY**

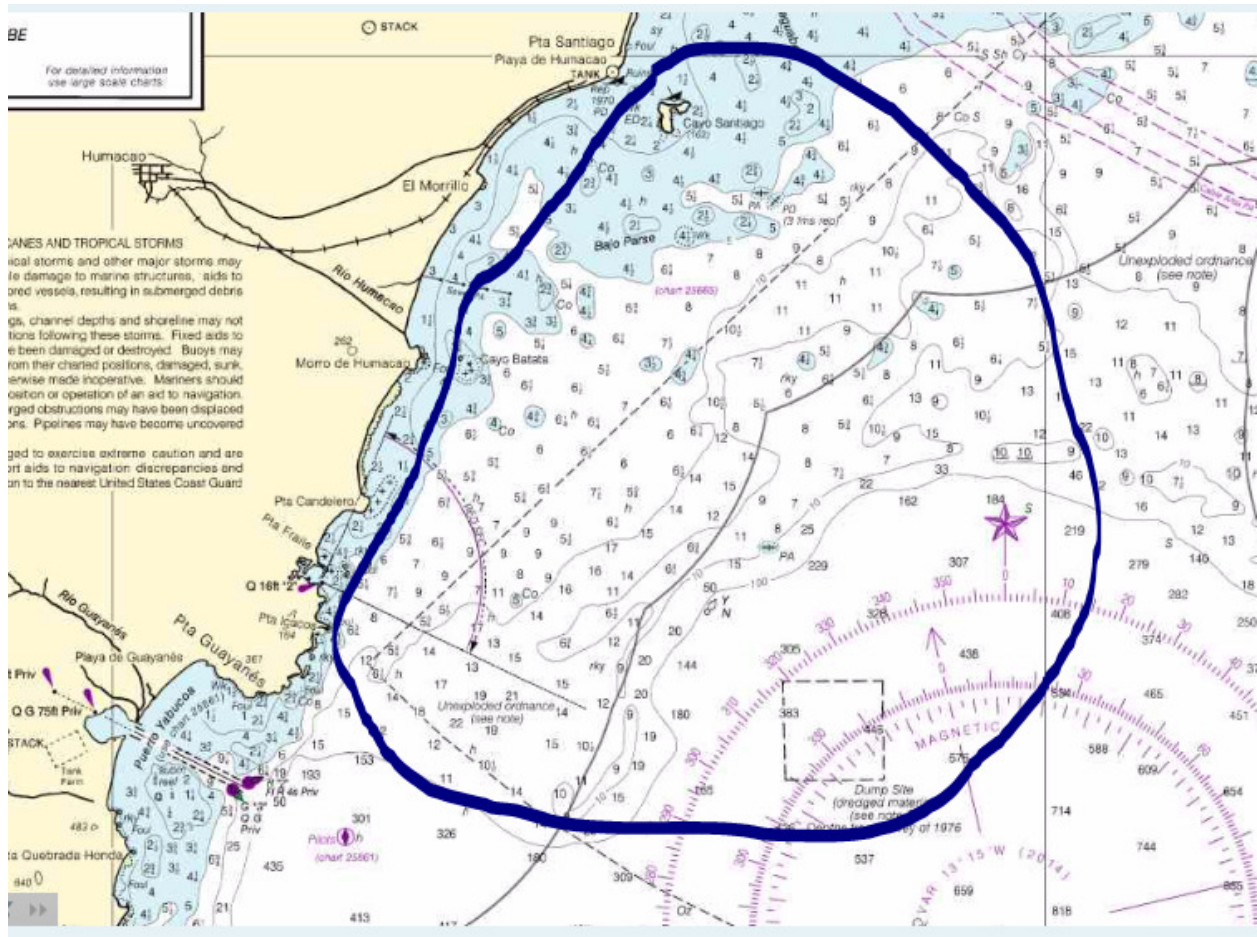
20.1 Competitors participate in the regatta entirely at their own risk. See Rule 4, Decision to Race. The Organizing Authority, the Race Committee, the Event Volunteers, and the Sponsors will not accept any liability for material damage or personal injury or death sustained in conjunction with or prior to, during, or after the regatta.

20.2 All competitors must complete, execute, and delivery the "Waiver Form" to the Regatta Headquarters, by 1800 hours on Friday May 22nd, 2015. The "Waiver Form" is available under the Documents & Forms link in the Yacht Scoring website.



# PUERTO RICO **Heineken**<sup>®</sup> INTERNATIONAL REGATTA

## Attachment I: Racing Area



**NOT FOR NAVIGATION PURPOSE**

## **Attachment II Courses**

### ***CSA RACING/M32***

1. S-M1-F
2. S-M1-M4 (GATE)-M1-F
3. S-M1-M5-M1-F
4. S-M1-OS2-M5-M1-F
5. S-M1-OS1-M5-M1-F
6. S-M1-F(PALMAS)

### ***IC24/J24***

1. S-M3-F
2. S-M3-M4 (GATE)-M3-F
3. S-M3-M5-M3-F
4. S-M3-OS2-M5-M1-F
5. S-M3-OS1-M5-M3-F
6. S-M2-F(PALMAS)

### ***J&M/RAYA/HUNTER 22'/MARINER 19/CHALANAS 24'***

1. S-M2-F
2. S-M2-M4 (GATE)-M2-F
3. S-M2-M5-M2-F
4. S-M2-OS2-M5-M2-F
5. S-M2-OS1-M5-M2-F
6. S-M2-F(PALMAS)



**Attachment II (cont.): Courses**

